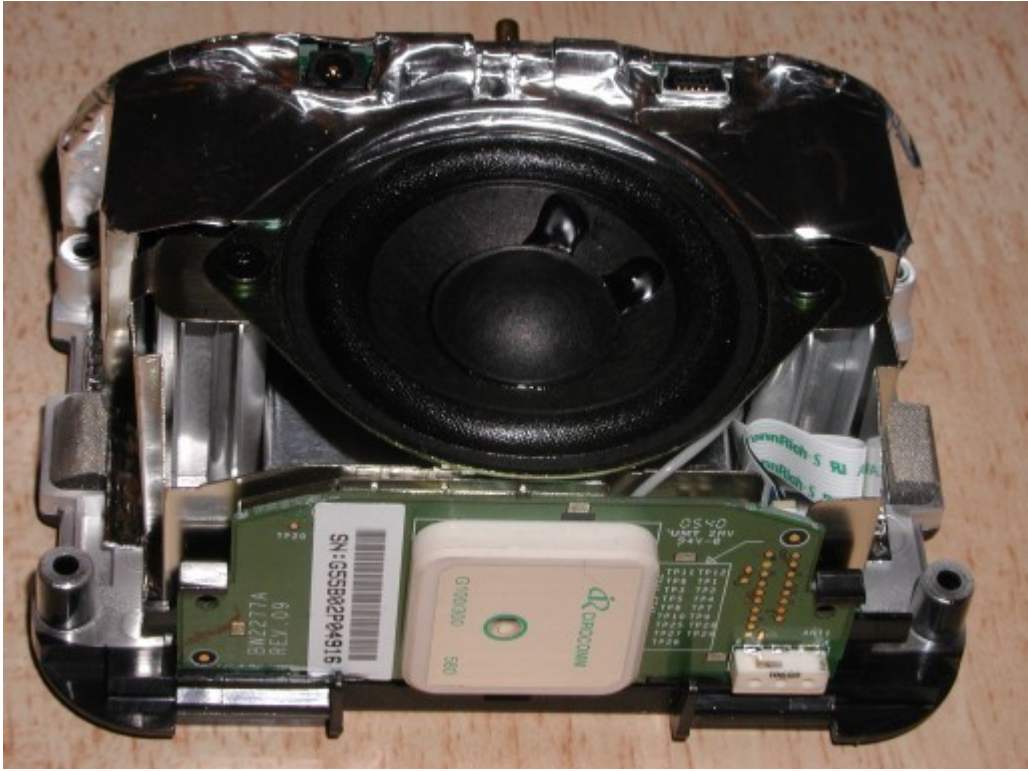
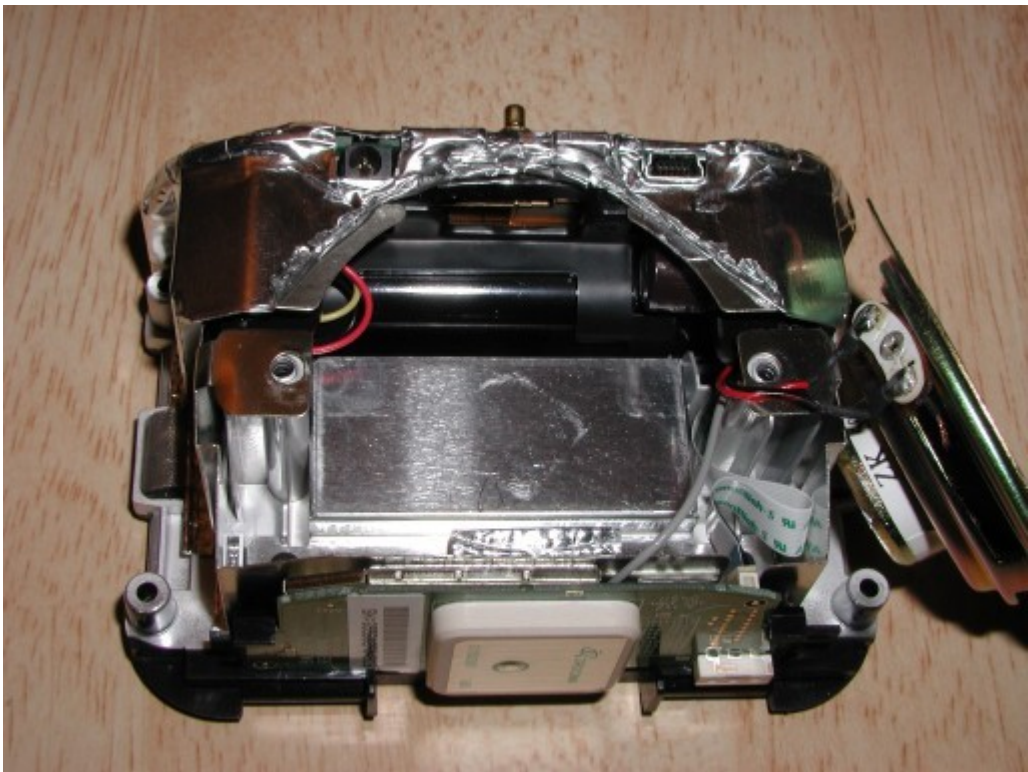
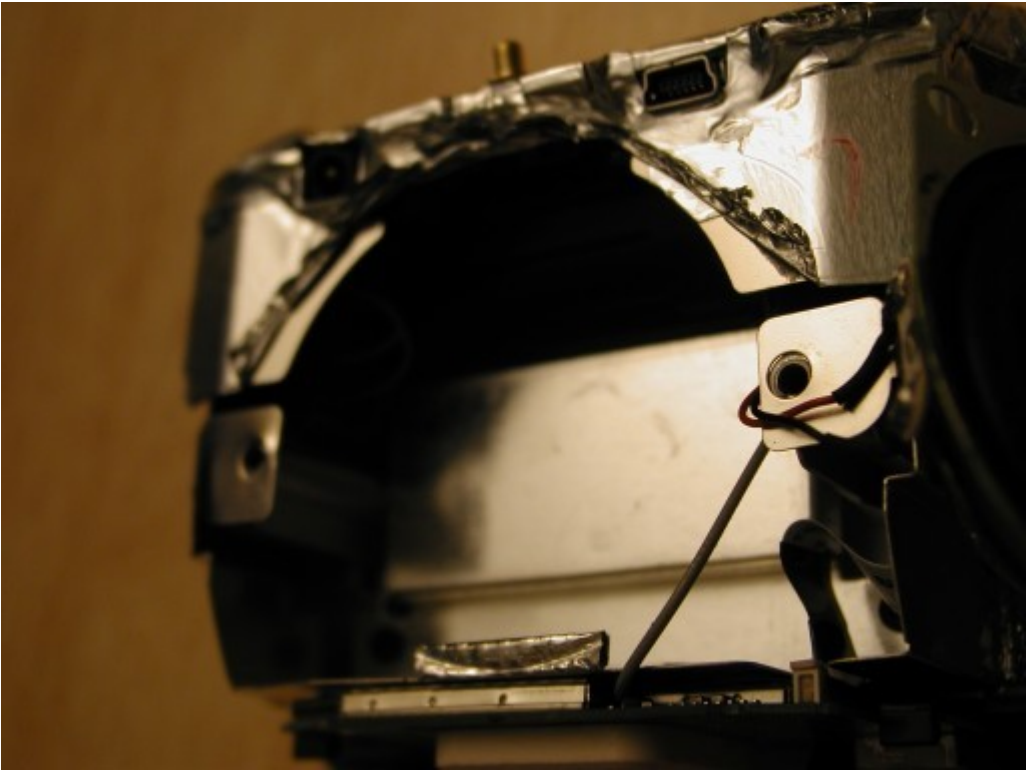
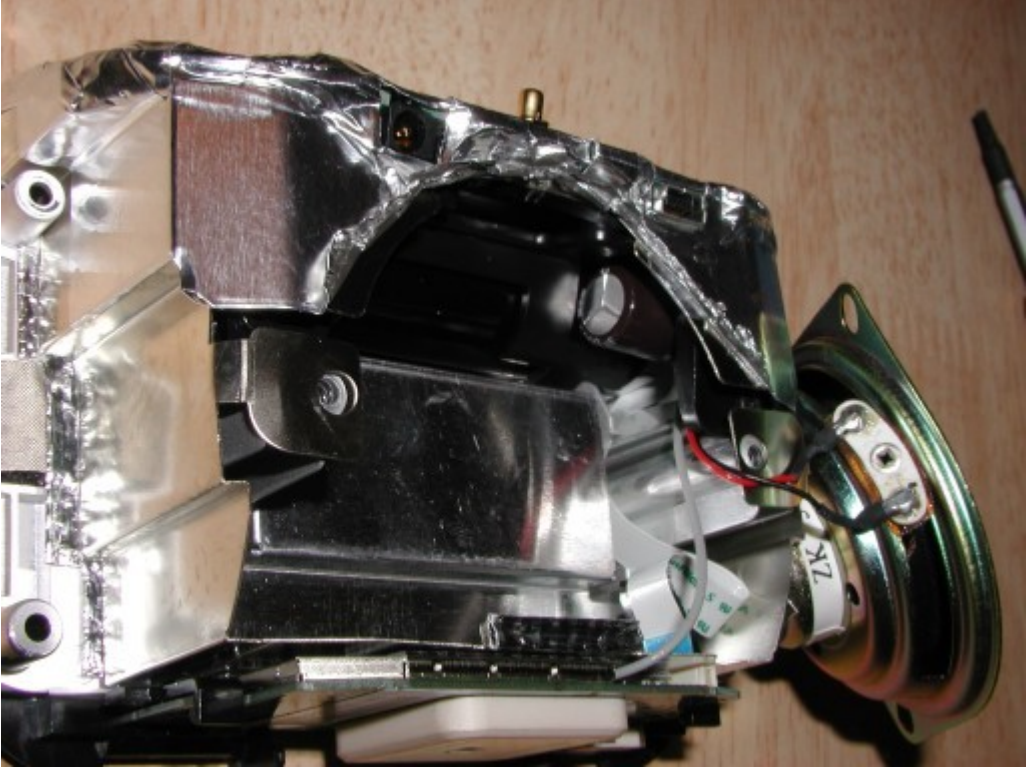


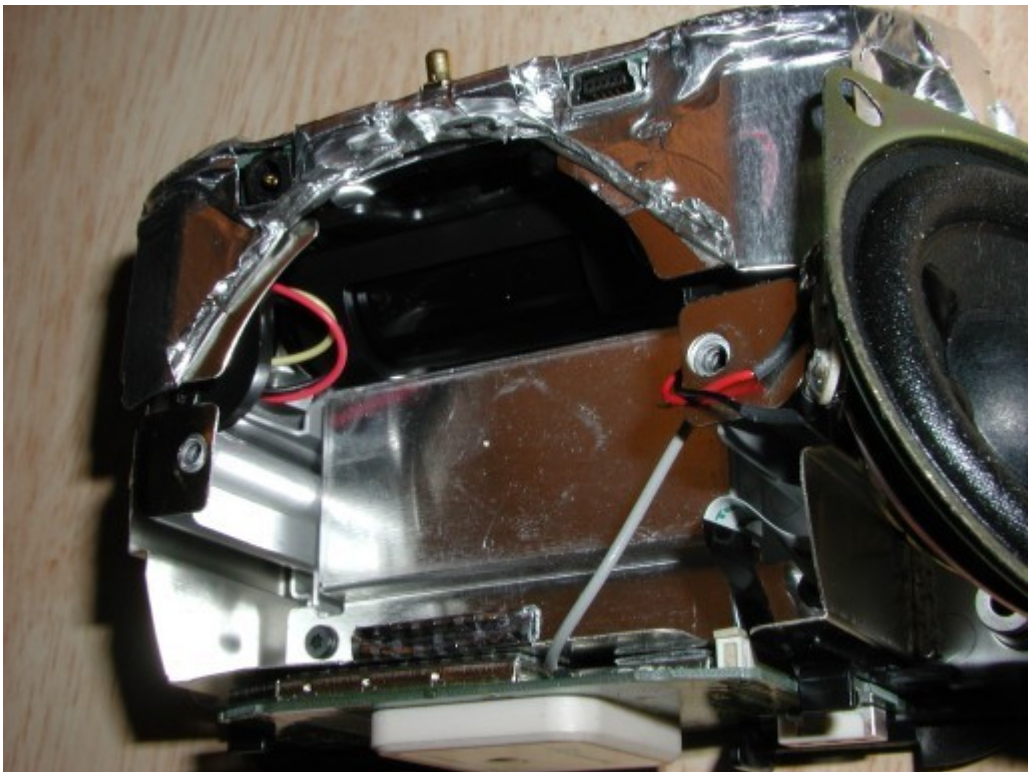
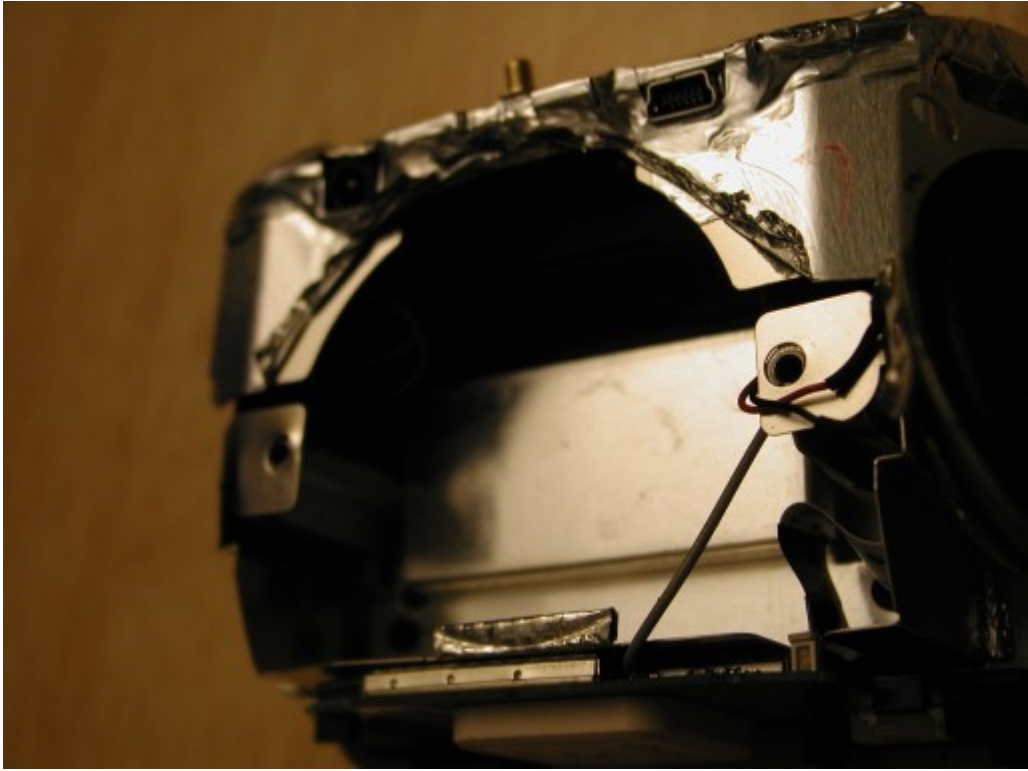
# COMO ABRIR EL NAVEGADOR TOMTOM GO PARA CAMBIAR LA PILA O PANTALLA

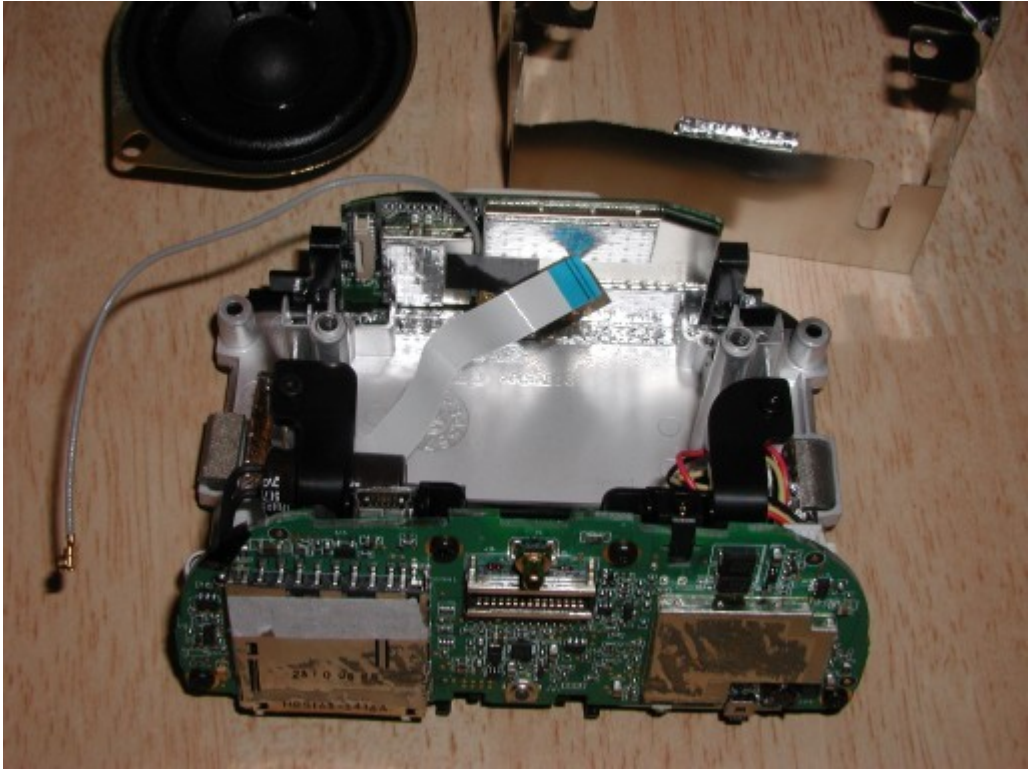


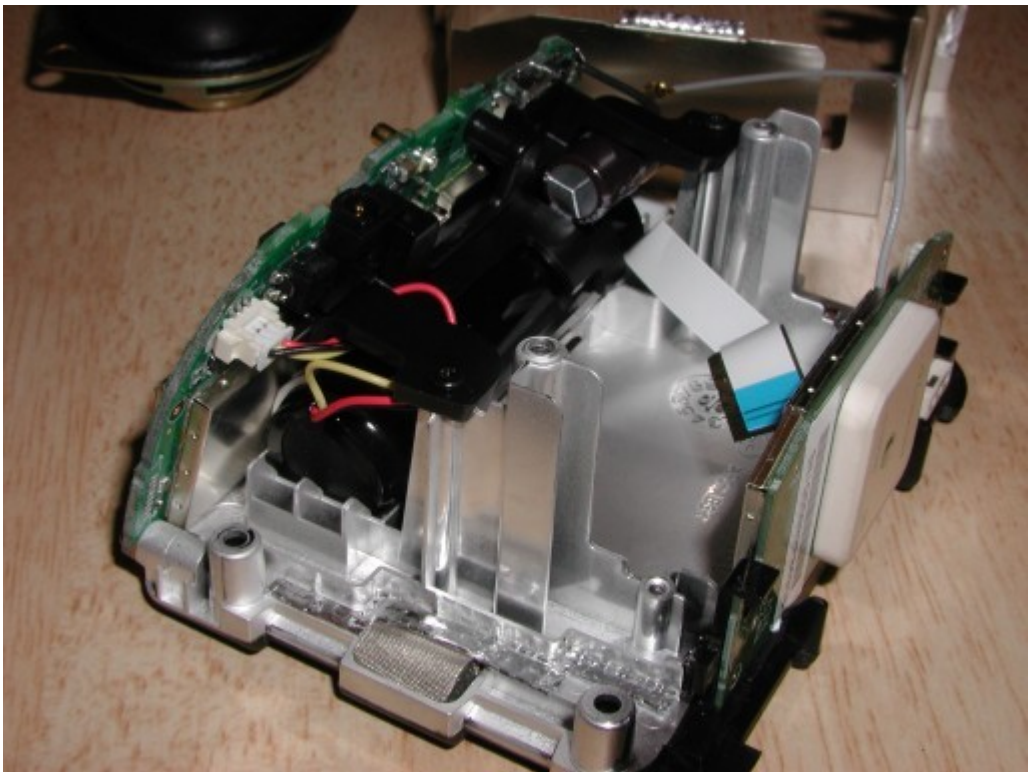
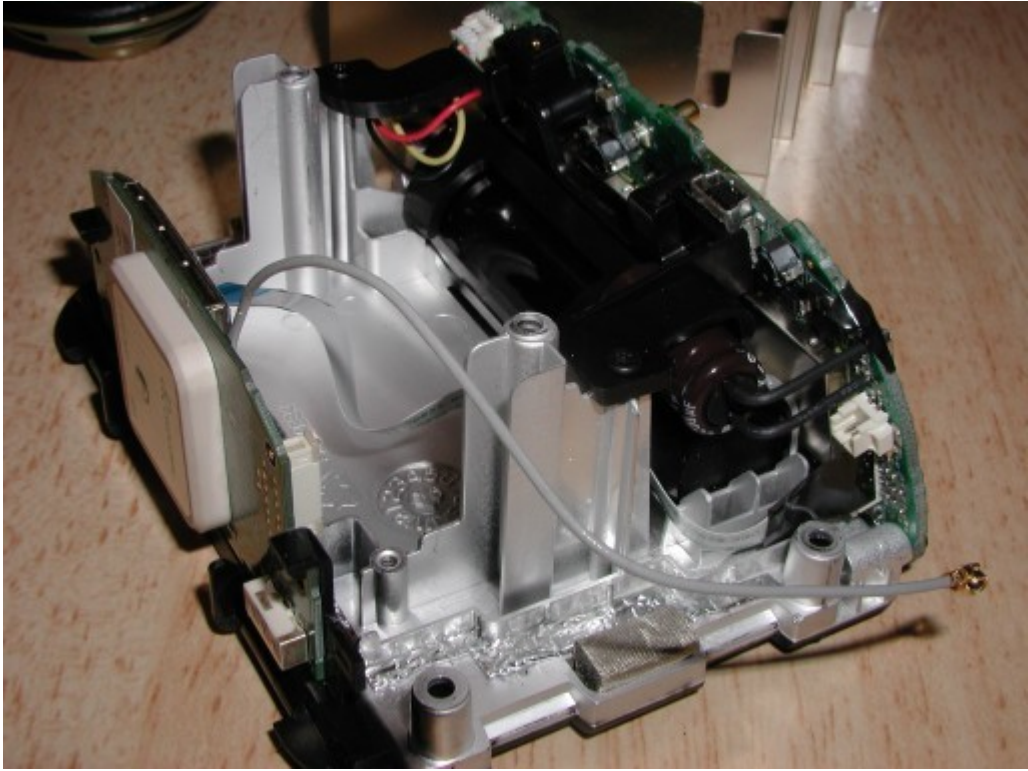


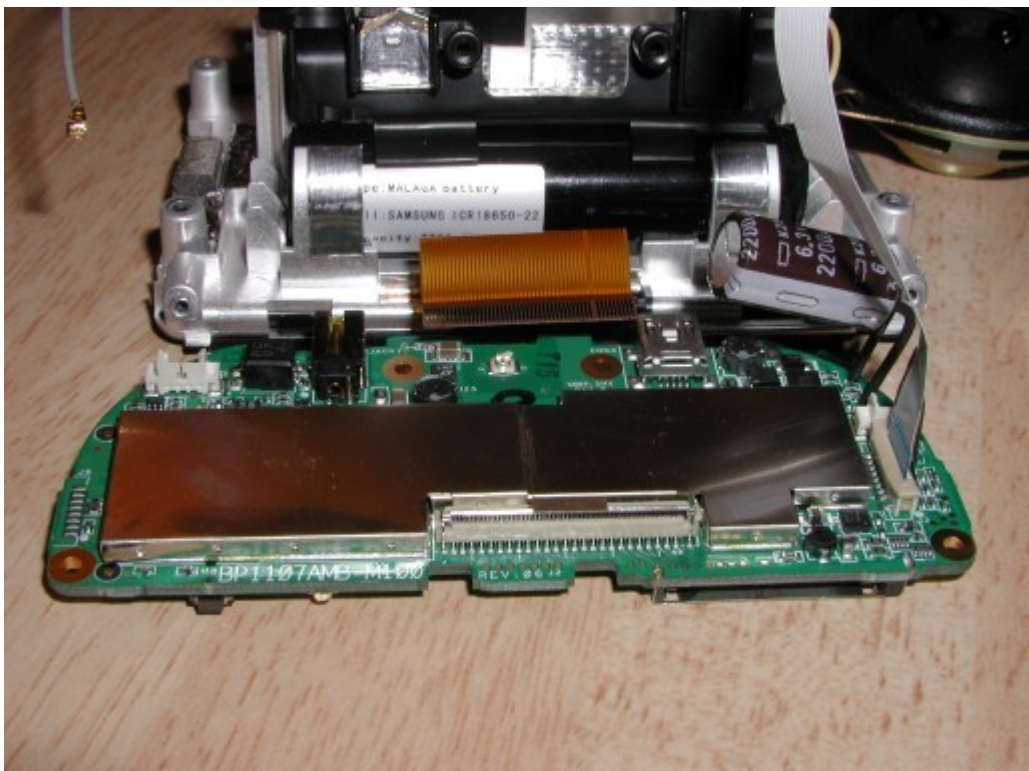
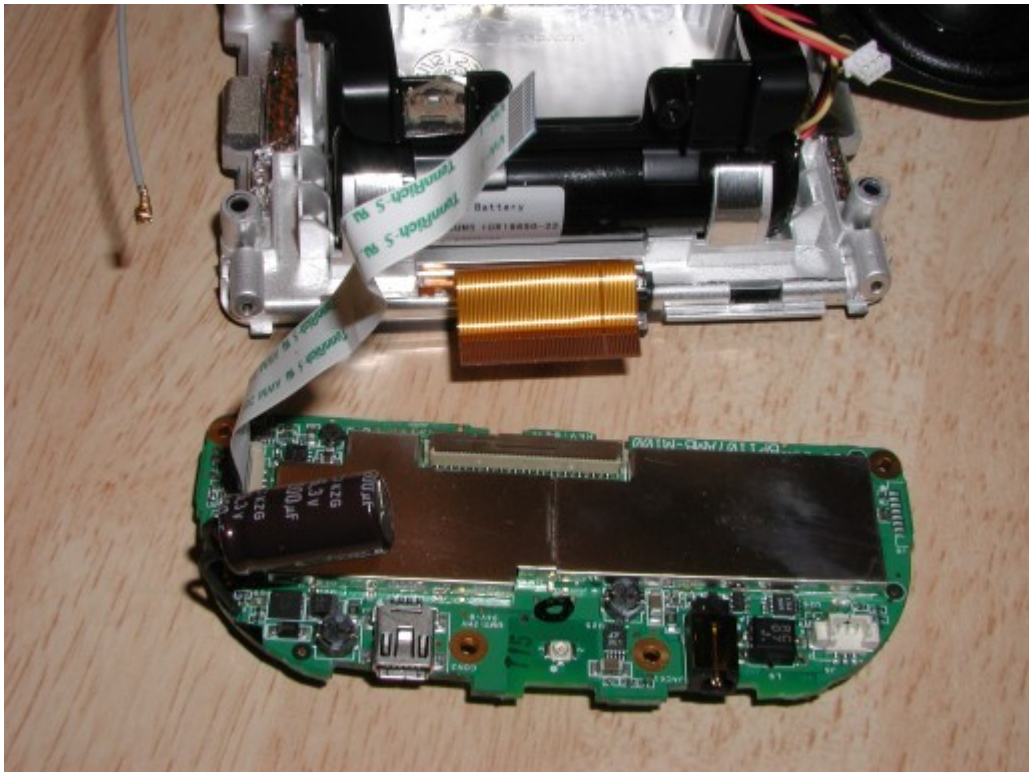


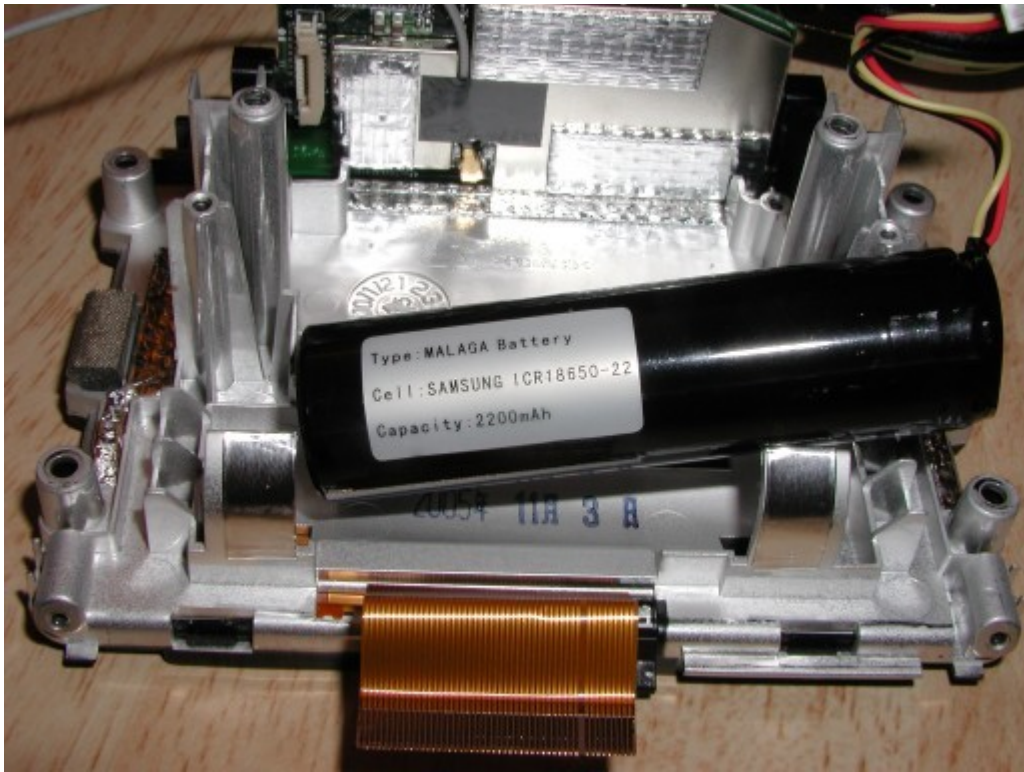










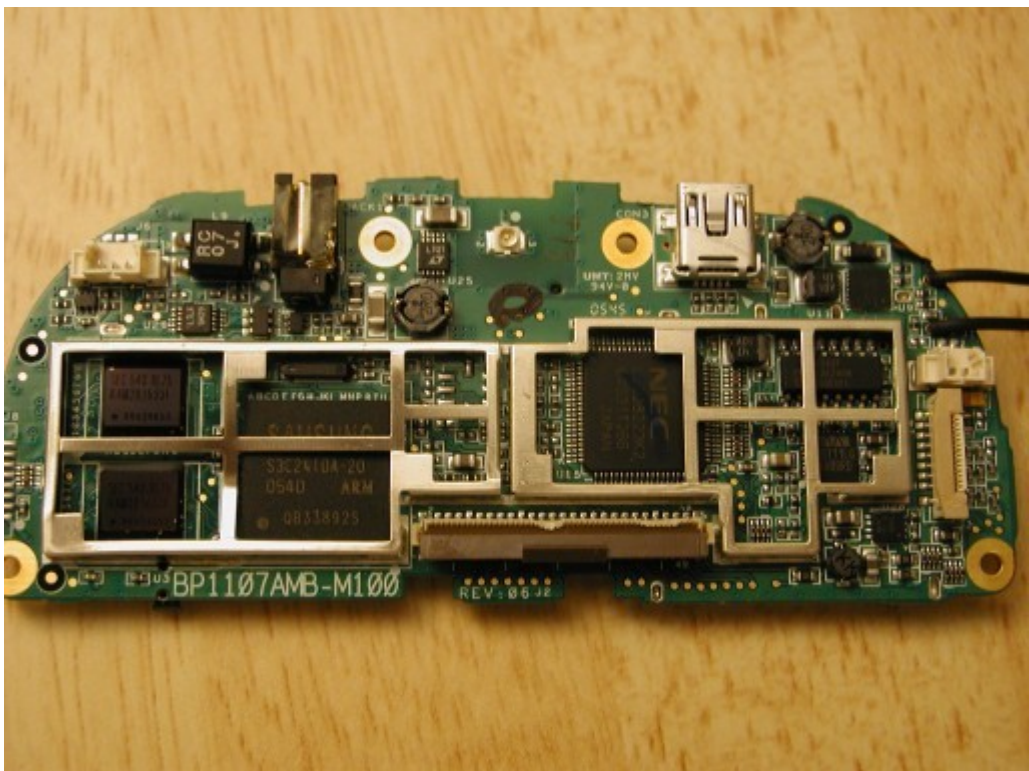


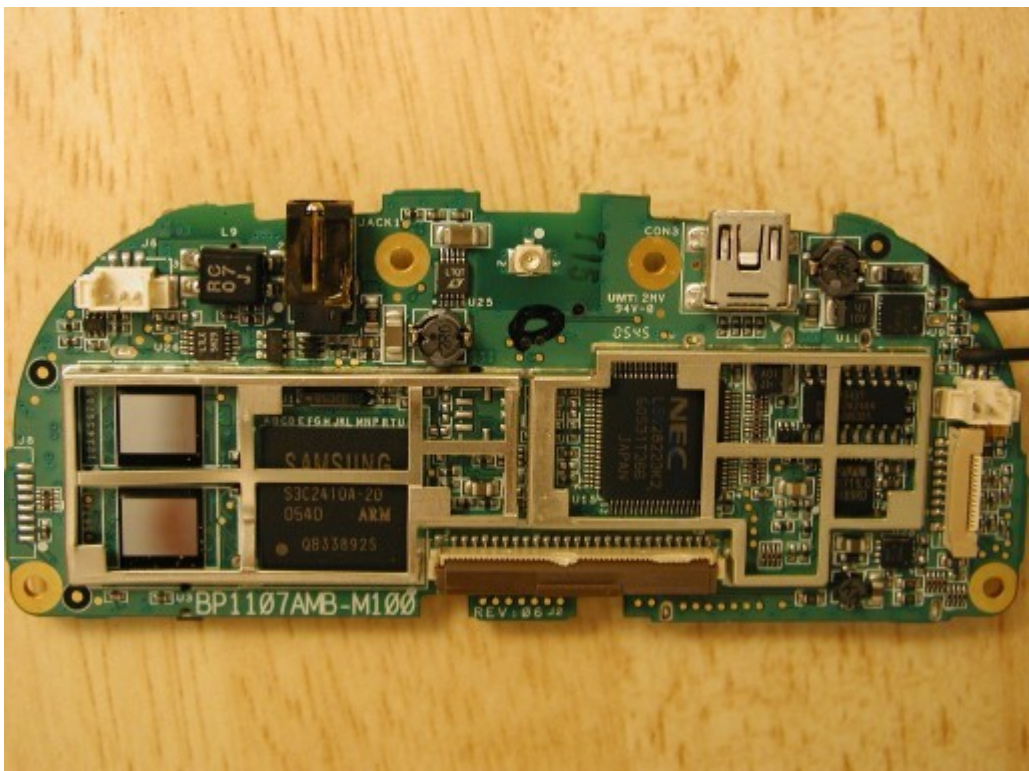
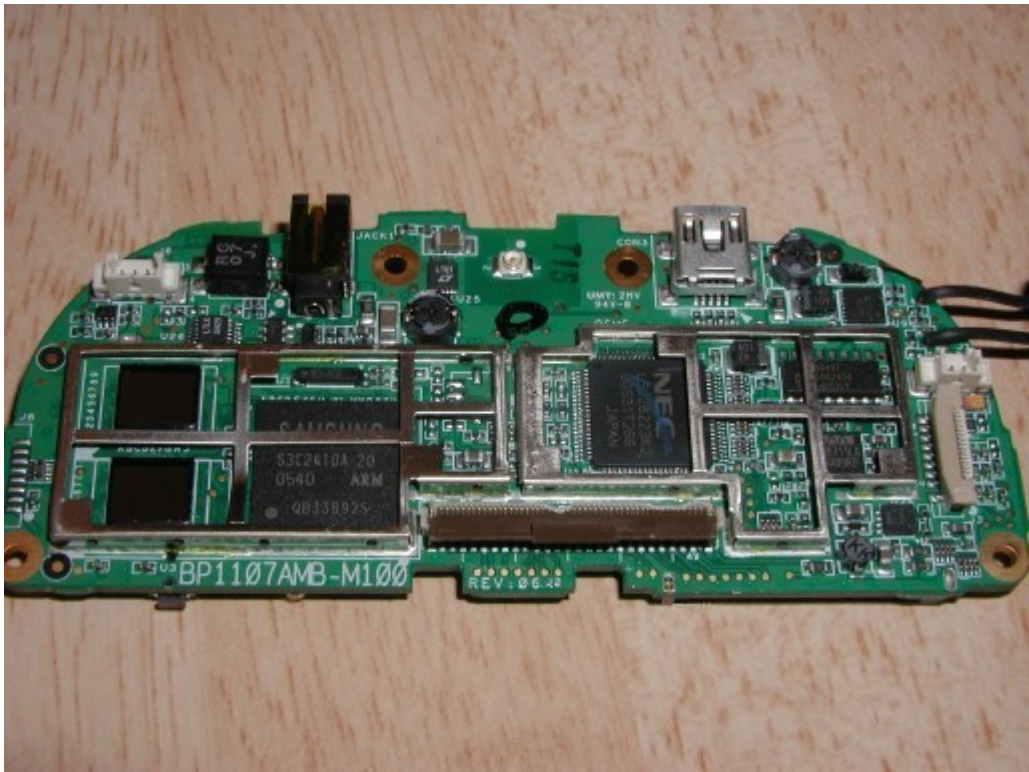


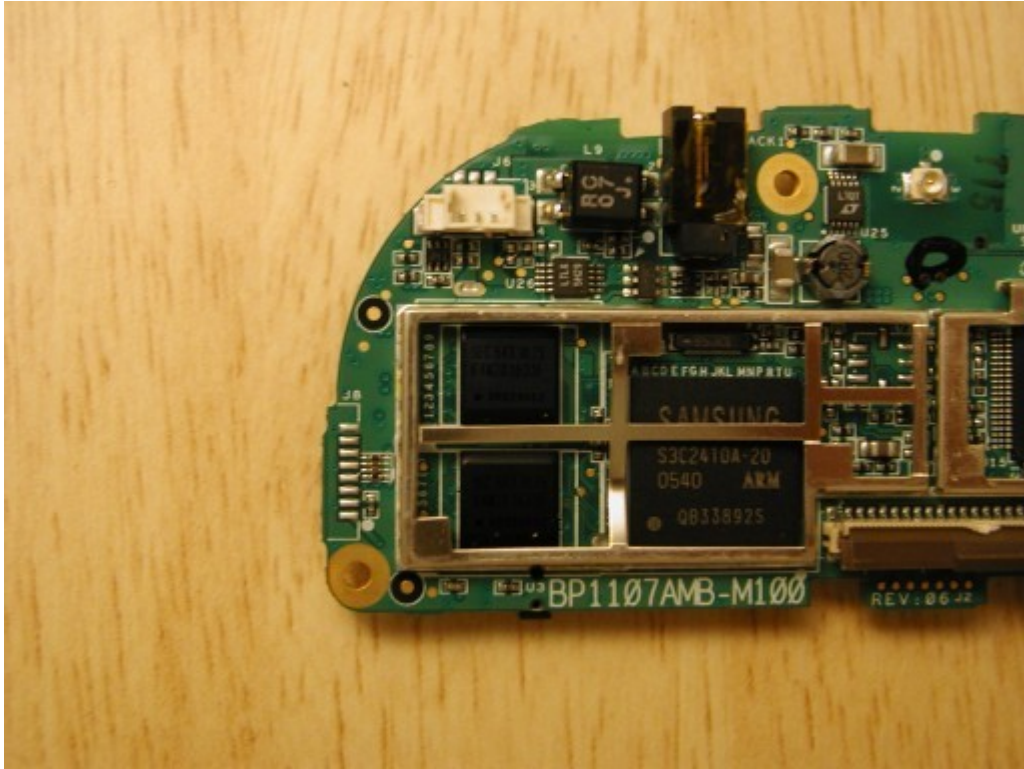
MODEL: NL2432HC22-25E  
SERIAL: A5A30L31  
PANEL: A2645X1813092  
05.10.28/  
NEC NEC LCD Technologies, Ltd. MADE IN JAPAN



MODEL: NL2432HC22-25E  
SERIAL: A5A30L31  
PANEL: A2645X1813092  
05.10.28/  
NEC NEC LCD Technologies, Ltd. MADE IN JAPAN







**ENLACES DE INTERES:**

**PILAS PARA TOMTOM:**

[http://www.google.com/products?hl=en&q=tomtom+go+battery&um=1&ie=UTF-8&sa=X&oi=product\\_result\\_group&resnum=1&ct=title](http://www.google.com/products?hl=en&q=tomtom+go+battery&um=1&ie=UTF-8&sa=X&oi=product_result_group&resnum=1&ct=title)